



CROCHET | SKILL LEVEL: **INTERMEDIATE**

ABBREVIATIONS

Approx = Approximately

Beg = Beginning

Beg Dtr5tog (worked over 5 sts)

= Ch 5 (counts as dtr). [(Yoh) 3 times and draw up a loop in next stitch. (Yoh and draw through 2 loops) 3 times] 4 times. Yoh and draw through all loops on hook – Beginning double treble 5 together made. Counts as 1 stitch.

Ch = Chain(s)

Dc = Double crochet

Dtr = (Yoh) 3 times and draw up a loop in next stitch. (Yoh and draw through 2 loops on hook) 4 times - Double treble made.

Mosaic Dc = Working in front of chain spaces, work 1 dc in next skipped sc 3 rows below

Pat = Pattern

Rep = Repeat

Rnd(s) = Round(s)

RS = Right side

Sl st = Slip stitch

Sc = Single crochet

Sc2tog = Draw up a loop in each of next 2 stitches. Yoh and draw through all 3 loops on hook.

Sp = Space

St(s) = Stitch(es)

WS = Wrong side

Yoh = Yarn over hook

MATERIALS

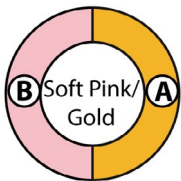
Caron® Simply Soft® O'Go® (5 oz/141 g; 228 yds/250 m)

Gold/Soft Pink (40018)

5 O'Gos

Contrast A: Gold

Contrast B: Soft Pink



Size U.S. I/9 (5.5 mm) crochet hook **or size needed to obtain gauge.**
2 stitch markers.

MEASUREMENTS

Approx 18 x 58" [45.5 x 147.5 cm].

GAUGES

13 sts and 18 rows = 4" [10 cm] in Mosaic pattern.

13 sts and 8 rows = 4" [10 cm] in Track Stitch pattern.

INSTRUCTIONS

Notes

- To begin working with the O'Go format, carefully cut plastic tie where the ends of the O'Go meet.
- Pull tie to remove.
- Start stitching!
- Colors can be easily separated by gently pulling apart and cutting at the color transition. Each color is ready to use.
- To change color, work to last 2 loops on hook. Draw loop of next color through 2 loops on hook to complete st and proceed in next color.
- Carry color not in use loosely up side of work.
- Each skipped sc has ch-2 worked above it for 2 rows. This establishes the 'gap' where Mosaic Dc will later be worked
- Mosaic Dc always replaces sc directly behind it on working row

- WS of your work maintains alternating 2-row striped pattern because you are working in *front* of chain spaces each time you work Mosaic Dc - you are never working around chain-spaces. The chain-spaces sit *behind* Mosaic Dc.

With A, ch 101. (See diagram on page 3).

1st row: (RS). With A, 2 sc in 2nd ch from hook. 1 sc in each ch to last 2 ch. Sc2tog. Turn. 100 sc.

2nd row: With A, ch 1. Sc2tog. 1 sc in each sc to last sc. 2 sc in last sc. Turn.

3rd row: With B, ch 1. 2 sc in first sc. 1 sc in each of next 2 sc. *Ch 2. Skip next sc. 1 sc in each of next 5 sc. Rep from * to last 7 sc. Ch 2. Skip next sc. 1 sc in each of next 4 sc. Sc2tog. Turn.

4th row: With B, ch 1. Sc2tog. 1 sc in each of first 3 sc. Ch 2. Skip next ch-2 sp. *1 sc in each of next 5 sc. Ch 2. Skip next ch-2 sp Rep from * to last 4 sc. 1 sc in each of next 3 sc. 2 sc in last sc. Turn.

5th row: With A, ch 1. 2 sc in first sc. 1 sc in each of next 3 sc. *Ch 2. Skip next sc. Mosaic Dc. Ch 2. Skip next sc. 1 sc in each of next 3 sc. Rep from * to last 6 sts. Ch 2. Skip next sc. Mosaic Dc. 1 sc in each of next 2 sc. Sc2tog.

6th row: With A, ch 1. Sc2tog. 1 sc in each of next 2 sts. Ch 2. Skip next ch-2 sp. 1 sc in each of next 3 sc. *Ch 2. Skip next ch-2 sp. 1 sc in next st. Ch 2. Skip next ch-2 sp. 1 sc in each of next 3 sc. Rep from * to last 2 sts. 1 sc in next sc. 2 sc in last sc. Turn.

7th row: With B, ch 1. 2 sc in first sc. (Ch 2. Skip next sc. 1 sc in next sc) twice. Ch 2. Skip next sc. Mosaic Dc. *Ch 2. Skip next st. Mosaic Dc. Ch 2. Skip next sc. 1 sc in next sc. Ch 2. Skip next sc. Mosaic Dc. Rep from * to last 3 sts. 1 sc in next sc. Sc2tog over last 2 sc. Turn.

8th row: With B, ch 1. Sc2tog. *1 sc in next st. Ch 2. Skip next ch-2 sp. Rep from * to last 2 sts. 1 sc in next sc. 2 sc in last sc. Turn.

9th row: With A, ch 1. 2 sc in first sc. 1 sc in next sc. *(Ch 2. Skip next sc. Mosaic Dc) twice. 1 sc in next sc. Mosaic Dc. Rep from * to last 2 sts. Sc2tog. Turn.

10th row: With A, ch 1. Sc2tog. *1 sc in each of next 2 sts. (Ch 2. Skip next ch-2 sp. 1 sc in next st) twice. Rep from * to last 2 sts. 1 sc in next sc. 2 sc in last sc. Turn.

11th row: With B, ch 1. 2 sc in first sc. *1 sc in each of next 3 sc. Mosaic Dc. Ch 2. Skip next sc. Mosaic Dc. Rep from * to last 3 sts. 1 sc in next sc. Sc2tog. Turn.

12th row: With B, ch 1. Sc2tog. 1 sc in next sc. *Ch 2. Skip next ch-2 sp. 1 sc in each of next 5 sts. Rep from * to last st. 2 sc in last sc. Turn.

13th row: With A, 2 sc in first sc. 1 sc in next sc. *1 sc in each of next 5 sc. Mosaic Dc. Rep from * to last 2 sts. Sc2tog. Turn.

14th row: With A, ch 1. Sc2tog. 1 sc in each st to last st. 2 sc in last st. Turn.

These 14 rows form Mosaic Pat. Break B.

With A, proceed as follows:

1st row: (RS). Ch 1. 2 sc in first st. 1 sc in each st to last 2 sts. Sc2tog. Turn.

2nd row: Ch 1. Sc2tog. 1 sc in each sc to last sc. 2 sc in last sc. Turn.

3rd row: As 1st row. Turn.

4th row: Beg Dtr5tog. 1 dtr in each sc to last sc. 5 Dtr in last sc. Turn. These 4 rows form Track St.

Rep last 4 rows Track St 10 times more, ending last rep on a 3rd row.

Beg on 2nd row, rep 2nd to 14th rows of Mosaic Pat, placing marker at either end of 7th row. Break A.

With B, rep 1st to 4th rows of Track St 11 times total, ending last rep on a 3rd row.

Beg on 2nd row, rep 2nd to 14th rows of Mosaic Pat.

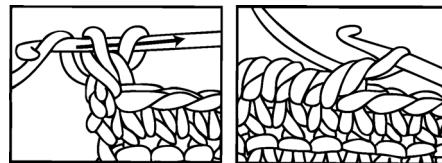
Fasten off.

Border

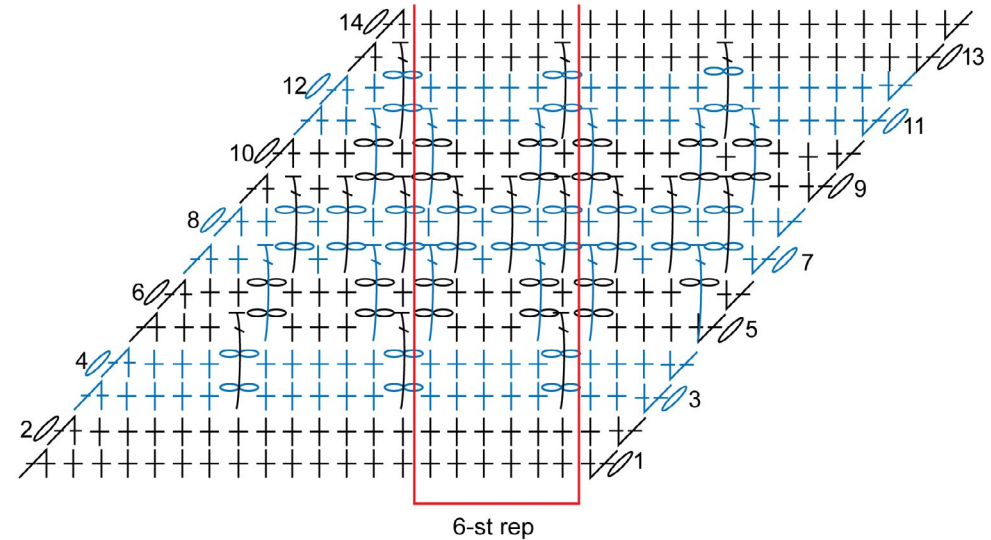
With RS facing and Track St section in A at left, join A with sl to edge of Shawl at marker.

1st rnd: Ch 1. Work sc evenly to next marker, working 3 sc in each corner. Join B. **Do not** break A but leave at WS of work. Work sc evenly around, working 3 sc in each corner. Join with sl st to first sc.

2nd rnd: With B, ch 1. *Working from left to right instead of right to left as usual*, work 1 reverse sc in each sc, changing colors to match previous rnd. Join with sl st to first sc. Fasten off.



REVERSE SC



- STITCH KEY
- = chain (ch)
 - = slip stitch (sl st)
 - ⊥ = single crochet (sc)
 - ⌋ = Mosaic double crochet (Mosaic dc)

